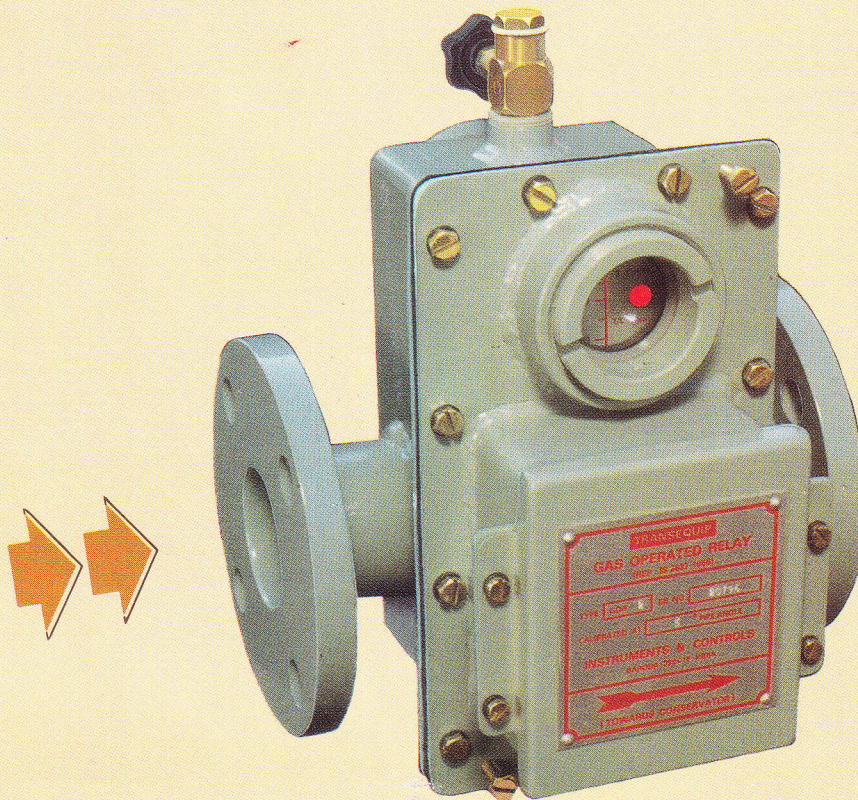
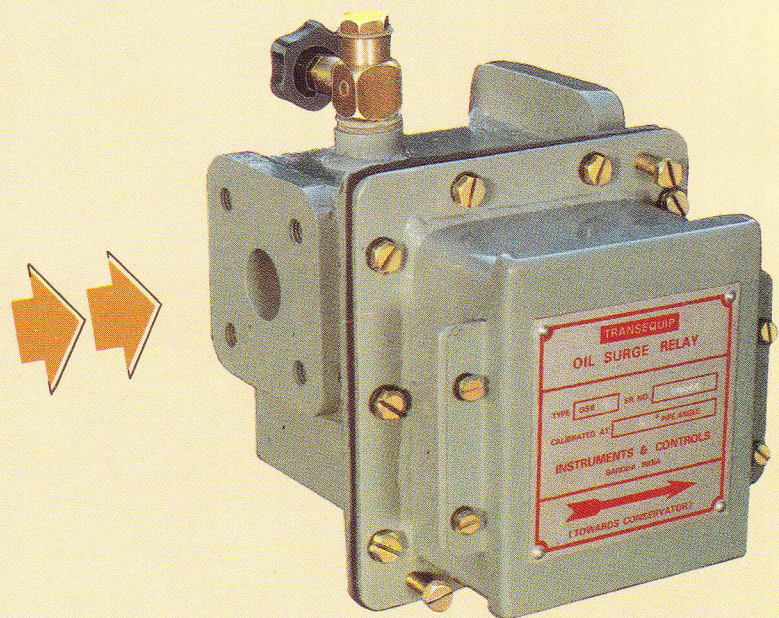


GAS & OIL RELAYS OIL SURGE RELAYS



GAS & OIL RELAY - MODEL GOR-2
(Double Element Type)



OIL SURGE RELAY - MODEL OSR - 1
(Single Element Type)

For protection of Oil Filled :

- Transformers
- Capacitors
- Reactors
- On-Load Tap-Changers

GAS & OIL RELAYS (GOR) & OIL SURGE RELAYS (OSR)

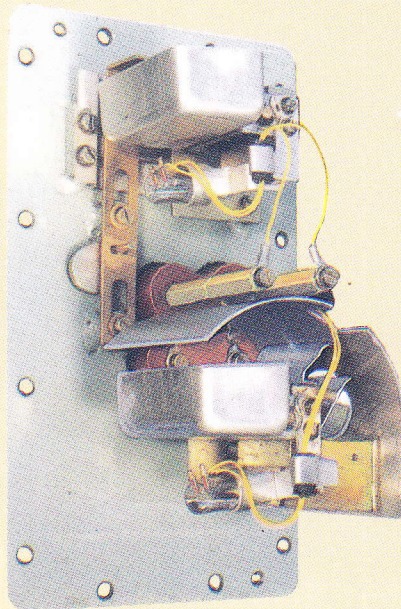
TRANSEQUIP

DEVOTED TO PERFECTION

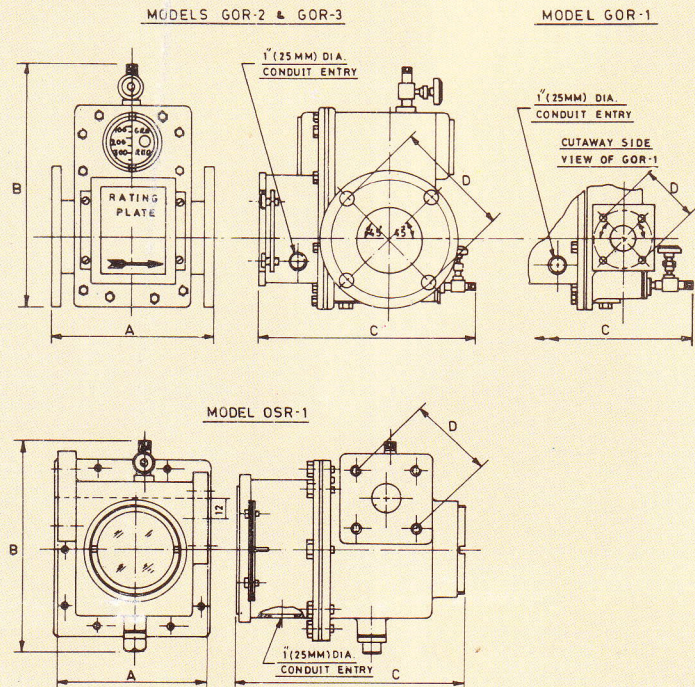
GENERAL

Gas & Oil Relay (Buchholz Relay) is designed for protection of Oil-filled Transformers, Capacitors, On-load Tap-changers etc. fitted with conservators, wherein every type of internal fault gives rise to Gas formation and Oil Surge (in case of major fault) to which the relay responds by giving an alarm signal and by making total disconnection from supply, if the fault persists. These relays are, therefore, Double Element Type.

Oil Surge Relay (basically Buchholz Relay) is specifically designed to operate due to an oil surge inside the apparatus to which it is connected. The main application of oil surge relay is for protection of On-load Tap-changers. It is also designed to by-pass normal amounts of gas which are generated during tap-change operations and will only respond to oil surges and loss of oil. These relays are, therefore, Single Element Type



GOR - Inside Assembly



PRINCIPAL DIMENSIONS							SPECIFICATIONS & SETTINGS				
MODEL	DIMENSIONS (mm)			PIPE FLANGE (mm)	NOM. PIPE BORE (mm)	BOLT HOLES	PCD (mm)	Appx. Wt.	TRIP CONTACT OIL VELOCITY at 1° to 9° Pipe Angle	ALARM CONTACT GAS VOL.	RECOMMENDED TRANSFORMER RATINGS
	A	B	C								
GOR-1	127	281	235	80 SQ	25 DIA	4-M10 TAPPED	72	9.1	70-130 CPS	125 cc	Up to 1 MVA
GOR-2	215	281	235	150 DIA	50 DIA	4-HOLES 18-DIA	115	11.1	70-140 CPS	200 cc	1 to 10 MVA
GOR-3	215	281	260	185 DIA	80 DIA	4-HOLES 18-DIA	145	11.8	90-160 CPS	250 cc	Above 10 MVA
OSR-1	127	201	196	80 SQ	25 DIA	4-M10 TAPPED	72	5.9	60-90 CPS		Only for ON-LOAD TAP CHANGERS-1*
Models GOR-2 and GOR-3 can be supplied with 184 FD instead of 215 FD (DIM-A), if required. Test Certificate confirming to IS : 3637-1966 is issued with each relay sold by us.								SWITCH RATINGS : 2 Amps at 250V AC/DC Relays comply fully with IS : 3637-1966 Flanges conform to IS : 3639			

NOTE : Due to continuous improvements from time to time, the right to supply products, which may differ from those illustrated and described in this leaflet, are reserved by us.

INSTRUMENTS & CONTROLS

146, G. I. D. C. INDUSTRIAL ESTATE, MAKARPURA, BARODA-10